

# ICNC 2026

19th International Child  
Neurology Congress

TAIPEI TAIWAN

OCT 5-9, 2026

CONNECTING THE DOTS,  
MAPPING THE FUTURE



# CONTENTS

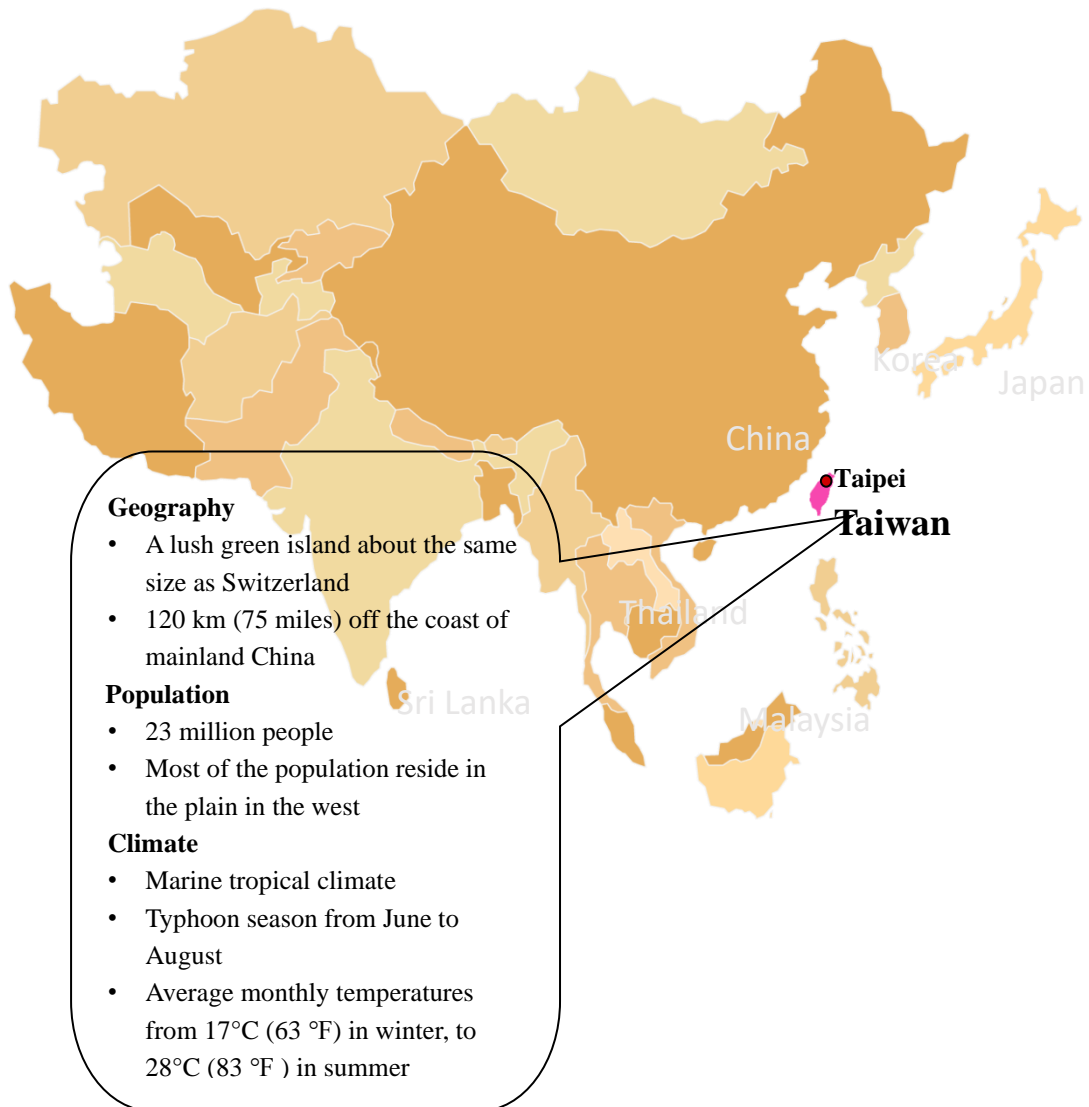
---

WHY TAIWAN.....	01
-International Conference in Taipei .....	02
PROPOSED DATE & CONFERENCE VENUE.....	03
-Date .....	03
-Conference Venue .....	03
-Facility: Location and Transportation .....	04
-Facility: Flagship Conferences Held at TICC Recently .....	05
-Facility: Capacity Chart .....	06
-Facility: Floor Plans.....	07
HOTELS AND LODGING .....	09
TENTATIVE PROGRAM .....	13
-Highlights .....	14
-Plenary Speakers.....	14
-Master Classes.....	18
-Workshops.....	21
-Special Interest Groups.....	23
-Debates .....	23
BUDGET PLAN.....	24
-Discount for Young Generation and Low-income Countries....	24
-Registration Fee.....	24
-Detailed Budget.....	25
SOCIAL PROGRAMS .....	26
ORGANIZING COMMITTEE FOR ICNC 2026 PROPOSAL .....	27
TAIWAN AT A GLANCE.....	28
HOT TOURIST SPOTS IN TAIWAN .....	34

# ICNC 2026

Connecting the Dots,  
Mapping the Future

# WHY TAIWAN



Taiwan, as known as Formosa, is a beautiful tropical island located at the center of the Pacific Rim adjacent to the Asian continent. The mountainous island stretches geographically over the Tropic of Cancer and is covered by tropical and subtropical vegetation. There are about 18,400 species of wildlife on the island, 20% of which are rare or endangered species. According to the newest survey from InterNations in 2021, **Taiwan is ranked top 1 for the expat destination**. Not a single expat feels personally unsafe.

Taiwan has successfully hosted several flagship conferences: AOCCN 2015, AOCN 2021, ISS 2021, and CINP World Congress 2022. Built upon the success of previous experiences, we believe that Taiwan is an excellent candidate for hosting ICNC 2026.

Furthermore, Taiwan is known for its state-of-the-art facilities and rich culture. It is easily accessible from all around the world. According to a recent ICCA survey (International Congress and Convention Association), Taiwan is one of the most prominent international conference hosting country. It is ranked No. 4 in Asia and No. 26 worldwide.

## *International Conference in Taipei*

Taipei, as a capital of Taiwan, has been a host city of many international conferences for many years. There are many different kinds of convention centers located in Taipei to meet different needs. Most of the function rooms have modern audio and video facilities, and can be flexibly converted to host different types of events.

All in all, Taipei is an excellent place to host ICNC 2026 for the following reasons:

- ✧ Successful experiences in hosting many international conferences.
- ✧ High-standard international convention centers.
- ✧ Easy accessibility from all over the world.
- ✧ Cultural diversity and sightseeing attractions.
- ✧ Comfortable weather all year round, especially in September to November



# PROPOSED DATE & CONFERENCE VENUE

## *Date*

October 5 – 9 (Monday – Wednesday), 2026

## *Conference Venue: Taipei International Convention Center*

The Taipei International Convention Center (TICC) is a spectacular tribute to the emergence of Taipei as a world-class business center. It is built to meet all the demanding requirements of international conference organizers with state-of-the-art facilities and an uncompromisingly high standard of services. Many international conferences of 1000–3000 participants were held successfully at TICC each year.

TICC is located at the foothills of the eastern Hsin-Yi District, a neighborhood where the modern face of Taipei shines through glass, steel skyscrapers, grand boulevards, and impressive vistas. As the political, economic, and cultural center of Taipei, the Hsin-Yi district houses many landmark buildings, including the Taipei City Hall, the Taipei City Council, the National Sun Yat-Sen Memorial Hall, the Taipei World Trade Center, and one of the world's tallest buildings, Taipei 101.



## ***Facility: Location and Transportation***

### ***From Taiwan Taoyuan International Airport (TPE)***

#### **By Taxi**

Service Hours	Available 24 hours a day
Trip Duration	35–40 minutes
Taxi Fare	Approximately TWD 1,200 (USD 40) or according to the meter

#### **By MRT (Metro Rapid Transit)**

Service Hours	Available every 10 minutes
Trip Duration	50 minutes (transfer once)
Ticket Price	Adult TWD 180 (USD 6) / child TWD 150 (USD 5)

#### **By Bus**

Service Hours	Available every 20–30 minutes
Trip Duration	70–80 minutes
Ticket Price	Adult TWD 145 (USD 5) / child TWD 70 (USD 2.5)

### ***From Taipei Songshan International Airport (TSA)***

#### **By Taxi**

Service Hours	Available 24 hours a day
Trip Duration	15 minutes
Taxi Fare	Approximately TWD 180 (USD 6) or according to the meter
Distance	5 km (3.1 miles)

#### **By MRT (Metro Rapid Transit)**

Passengers only need to transfer once from TSA to Taipei 101 / World Trade Center. The trip duration is approximately 20–25 minutes, and the MRT fare is TWD 25.

### ***Facility: Flagship Conferences Held at TICC Recently***

Due to the COVID-19 pandemic, face-to-face international activities were very limited in these 2 years. There were many international conferences holding at Taipei International Convention Center except these 2 years.

<b>DATE</b>	<b>CONFERENCE NAME</b>	<b>PARTICIPANTS</b>
<b>2016/10/27-10/30</b>	The 11th IDF-WPR Congress 2016 & 8th AASD Scientific Meeting	3,185
<b>2016/11/26-11/29</b>	The 14 <sup>th</sup> Asia-Pacific Federation for Clinical Biochemistry and Laboratory Medicine Congress	3,000
<b>2017/9/11-9/13</b>	World Congress on IT 2017	3,013
<b>2018/10/17-10/20</b>	The 11th Asia Pacific Heart Rhythm Society Scientific Session	3,116
<b>2018/11/29-12/2</b>	The 23rd Congress of the Asian Pacific Society of Respiriology	2,450
<b>2019/10/22-10/27</b>	The 11th IAGG Asia/Oceania Regional Congress 2019	2,770
<b>2019/11/9-11/12</b>	Asian Patent Attorneys Association 2019	2,000

## Facility: Capacity Chart

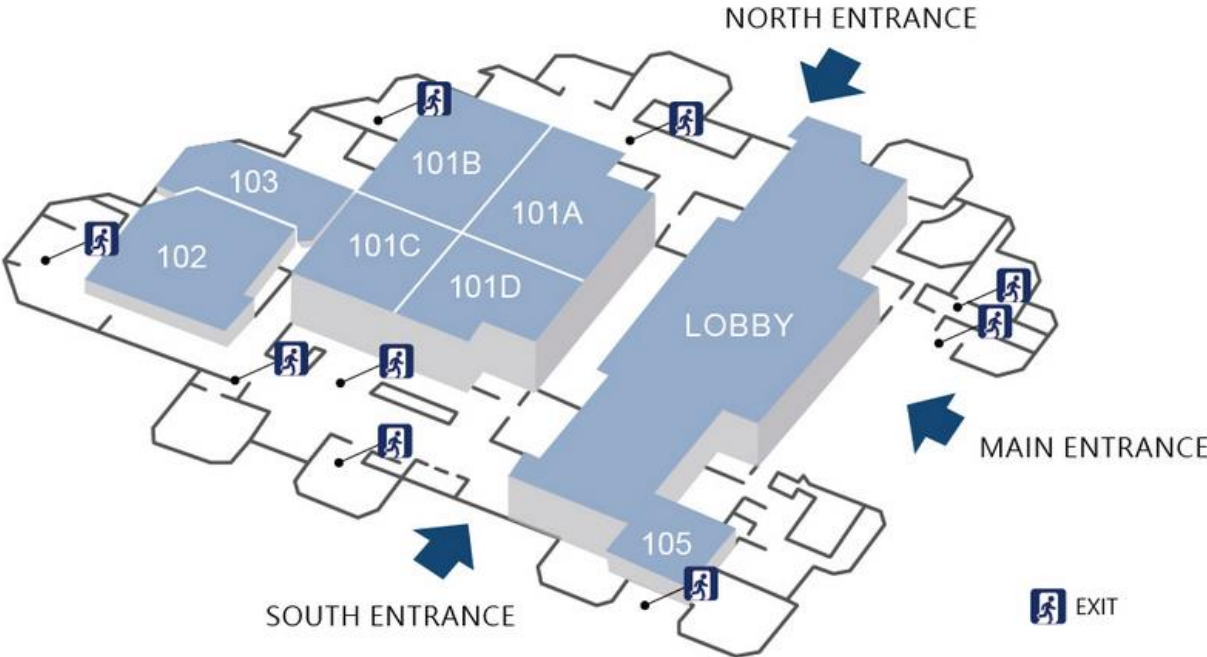
Room Name	Meeting Requirement	Capacity / Area (m <sup>2</sup> )
Plenary Hall	Opening and Plenary Lecture	2600 / 2973
101 (can be divided into 4 rooms)	Parallel Session	500/ 640
102 (can be divided into 6 rooms)	Parallel Session	200 / 232
201	Parallel Session]	550 / 729
Banquet Hall	Parallel Session	350 / 977
105	Secretariat & Preview Room	100 / 115
South Lounge	Administrative Meeting	90 / 152
Exhibition Hall	Exhibition	- / 1500
Registration	Registration	- / 570



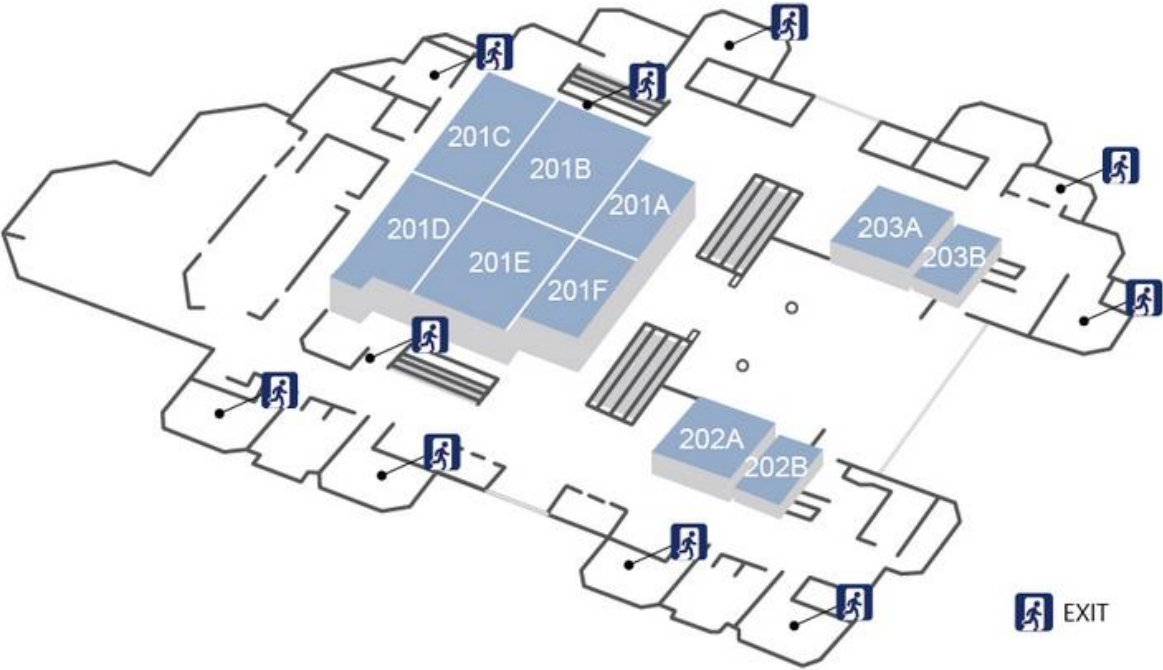


*Facility: Floor Plans*

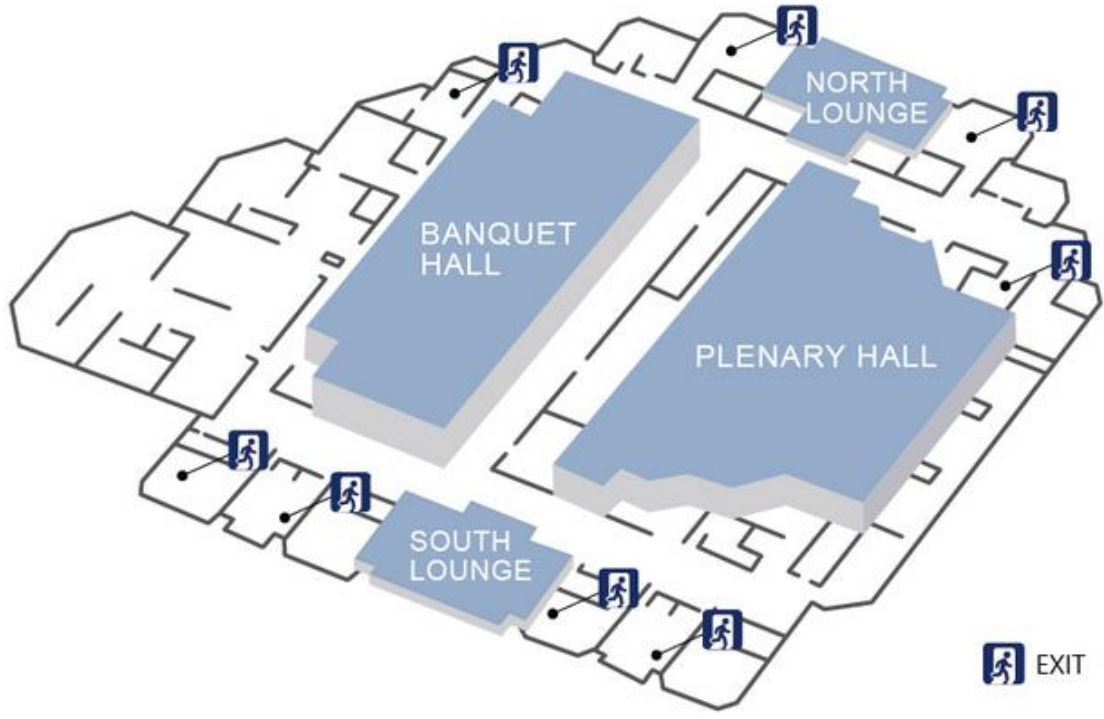
1<sup>st</sup> Floor



2<sup>nd</sup> Floor



**3<sup>rd</sup> Floor**



# HOTELS AND LODGING



- |   |   |
|---|---|
| <b>A</b> Grand Hyatt Taipei                             | <b>B</b> Sheraton Taipei                  |
| <b>C</b> Regent Hotel                                   | <b>D</b> The Ambassador Hotel Taipei      |
| <b>E</b> Howard Hotel Taipei                            | <b>F</b> Caesar Park Hotel                |
| <b>G</b> Taipei Fullerton Hotel East                    | <b>H</b> Pacific Business Hotel           |
| <b>I</b> AT Boutique Hotel                              | <b>J</b> Taipei Charming City Hotel       |
| <b>K</b> Just Sleep @ NTU                               | <b>L</b> Just Sleep @ Ximending           |
| <b>M</b> Vendome Hotel Taipei                           | <b>N</b> RF Hotel                         |
| <b>O</b> Taipei Forte Orange Business Hotel<br>Guanqian | <b>P</b> Howard International House Hotel |
| <b>Q</b> Li-Yuan Hotel                                  | <b>R</b> China Youth Corps                |
| <b>S</b> Y Hotel Taipei                                 | <b>T</b> Taipei Yo Xing Regency           |
| <b>U</b> JV's Hostel                                    | <b>V</b> Best Hotel                       |

## Hotel List

Hotel information	Room type/ rate (USD)		Breakfast	Internet	Distance to venue	Number of rooms available
<b>A. Grand Hyatt Taipei</b>						
	Single	Twin	Included	Included	2 mins (Walk)	347
	300	328				
<b>B. Sheraton Taipei</b>						
	Single	Double	Included	Included	15 mins (Taxi) 30 mins (MRT)	113
	260	280				
<b>C. Regent Hotel</b>						
	Single	Twin	Included	Included	20 mins (Taxi) 35 mins (MRT)	253
	250	277				
<b>D. The Ambassador Hotel Taipei</b>						
	Single	Twin	Included	Included	20 mins (Taxi) 35 mins (MRT)	250
	178	193				
<b>E. Howard Hotel Taipei</b>						
	Single	Twin	Included	Included	10 mins (Taxi) 15 mins (MRT)	150
	169	187				
<b>F. Caesar Park Taipei</b>						
	Single	Twin	Included	Included	20 mins (Taxi) 15 mins (Walk)	191
	155	170				
<b>G. Taipei Fullerton Hotel East</b>						
	Single	Twin	Included	Included	5 mins (Taxi) 30 mins (Walk)	131
	136	150				

Hotel information	Room type/ rate (USD)		Breakfast	Internet	Distance to venue	Number of rooms available
<b>H. Pacific Business Hotel</b>						
	Single	Twin	Included	Included	3 mins (Taxi) 5 mins (Walk)	30
	117	132				
<b>I. AT Boutique Hotel</b>						
	Single	Twin	Included	Included	3 mins (Taxi) 5 mins (Walk)	68
	115	120				
<b>J. Taipei Charming City Hotel</b>						
	Single	Twin	Included	Included	5 mins (Taxi) 8 mins (Walk)	38
	105	105				
<b>K. Just Sleep @ NTU</b>						
	Single	Twin	Included	Included	15 mins (Taxi) 20 mins (MRT)	70
	97	110				
<b>L. Just Sleep @ Ximending</b>						
	Single	Twin	Included	Included	20 mins (Taxi) 30 mins (MRT)	120
	97	110				
<b>M. Vendome Hotel Taipei</b>						
	Single	Twin	Included	Included	10 mins (Taxi) 20 mins (MRT)	20
	90	98				
<b>N. RF Hotel</b>						
	Single	Twin	Included	Included	10 mins (Taxi) 20 mins (MRT)	20
	87	97				
<b>O. Taipei Forte Orange Business Hotel Guanqian</b>						
	Single	Twin	Included	Included	20 mins (Taxi) 15 mins (MRT)	40
	70	77				

Hotel information	Room type/ rate (USD)		Breakfast	Internet	Distance to venue	Number of rooms available
<b>P. Howard International House Hotel</b>						
	Single	Suite	Included	Included	15 mins (Taxi) 30 mins (MRT)	250
	70	121				
<b>Q. Li-Yuan Hotel</b>						
	Executive	Deluxe	Included	Included	20 mins (Taxi) 15 mins (MRT)	30
	70	77				
<b>R. China Youth Corps</b>						
	Single	Twin	Included	Included	20 mins (Taxi) 30 mins (MRT)	200
	66	66				
<b>S. Y Hotel Taipei</b>						
	Single	Twin	No	Included	20 mins (Taxi) 15 mins (MRT)	30
	58	67				
<b>T. Taipei Yo Xing Regency</b>						
	Superior	Standard	Included	Included	20 mins (Taxi) 20 mins (MRT)	90
	56	59				
<b>U. JV's Hostel</b>						
	Single	Double	No	Included	10 mins (Taxi) 15 mins (Walk)	10
	45	54				
<b>V. Best Hotel</b>						
	Single	Double	No	Included	10 mins (Taxi) 20 mins (MRT)	30
	53	53				
	70	121				

### **Total Hotel Rooms Available**

**2,481**

*\*The number of blocked rooms under USD 100 for ICNC 2026 is approximately 520.*

# TENTATIVE PROGRAM

*Connecting the dots, mapping the future*

Time	Oct. 5 (Mon.)	Oct. 6 (Tue.)	Oct. 7 (Wed.)	Oct. 8 (Thu.)	Oct. 9 (Fri.)	
06:00-07:00	Pre-Congress Workshops & Satellite Meetings	Registration	Registration	Registration	Registration	
07:00-08:00		Rise and Shine Seminars	Rise and Shine Seminars	Rise and Shine Seminars	Rise and Shine Seminars	
08:00-08:30	ICNA EB 2024 handover to EB 2026	2 Plenary Lectures	Prof. Renda Tribute Lecture & Frank Ford Lecture	Plenary Lecture & Prichard Award Lecture	Plenary Lecture & Wallace Award Lecture	
08:30-09:00						
09:00-09:30		Coffee Break	Coffee Break	Coffee Break	Coffee Break	
09:30-10:00		4 Parallel Symposia	4 Parallel Symposia	4 Parallel Symposia	4 Parallel Symposia	
10:00-10:30						
10:30-12:00	Lunch Break	Lunch Break	Lunch Break	Lunch Break	Closing Ceremony	
12:00-12:30						
12:30-13:00	Industry Symposium / ICNA EB Meeting	Lunch Symposia / Special Interest Group / Future Leaders of ICNA		Lunch Symposia / Special Interest Group / Future Leaders of ICNA	Post-Congress Satellites / Congress Evening Activities	
13:00-13:30		Lunch Symposia / Special Interest Group / ICNA Annual General Meeting		Lunch Symposia / Special Interest Group / Future Leaders of ICNA		
13:30-14:00		Free Paper Presentations	2 Workshops	Free Paper Presentations		2 workshops
14:00-14:30						
14:30-16:00		Coffee Break	Coffee Break	Coffee Break		Coffee Break
16:00-16:30	Supervised Poster Tours		Supervised Poster Tours			
16:30-17:30	Debates	Free Time		4 Master Classes		
17:30-18:00						
18:00-18:30	Free Time	Free Time	4 Master Classes (including dinner)	Banquet		
18:30-19:00						
19:00-19:30	ICNA EB Evening	Opening Ceremony				
19:30-20:00						
20:00-21:00						

## Highlights

We arrange many special and diverse topics for ICNC 2026, and believe that all the participants will benefit from this program as well as gain new ideas for future research. To promote the young scholars, we will choose 2 persons from different countries to present their outstanding research results in the “Rise and Shine Seminars”.

We pay attention to the child development in different developing countries and the education of child neurologists. We also pay attention to the long-term care and medical ethics in pediatric neurological diseases. Other highlights are listed below:

- ✧ Young Generation: We care a lot for young generations. There are different topics at Master Classes, Workshops and Future Leaders for young generation respectively.
  1. Master Class: Role model in the field of pediatric neurology
  2. Workshop: Career development for young generation
  3. Future Leaders of ICNA
- ✧ Telehealth/Telemedicine: Telemedicine and telehealth has played an important role due to COVID-19 pandemic. Related challenges and possibilities in pediatric neurology become a big issue.
- ✧ AI Healthcare: AI medical technology can reduce medical cost, improve healthcare efficiency, and increase healthcare quality. The experts will share their experiences in clinical findings and researches on AI in pediatric neurology.
- ✧ Medical Humanities: Medical humanities provide insight into human conditions, illness and suffering, perception of oneself. Medical Humanities are important for the high-quality education of future doctors.

## Plenary Speakers



*Ingrid Scheffer* (agree)

Laureate Professor Ingrid Scheffer’s work has resulted in major paradigm shifts in epilepsy syndromology and classification over many years. Her work has formed the essential basis for successful gene discovery such that her larger collaborative group has been the leaders in epilepsy gene identification for 18 years since they discovered the first gene associated with epilepsy. This body of work has resulted in insights into the biology of seizures.

Professor Scheffer is Chair of Paediatric Neurology at The University of Melbourne and Senior Principal Research Fellow at the Florey Institute of Neuroscience and Mental Health. Professor Scheffer currently leads the Australian Academy of Health and Medical Sciences as its President.

Ingrid and her colleagues have described a range of novel epilepsy syndromes beginning in infancy,



childhood and adult life. Her work has meant that children and adults with sodium channel disorders such as Dravet syndrome and related epilepsies are diagnosed earlier and treated appropriately which improves their long term outcomes. Her recent work on a fascinating disorder occurring exclusively in females, Epilepsy limited to Females with Mental Retardation, is changing the way family histories are interpreted and will benefit affected women and transmitting men by improving genetic counseling. She has considerably expanded our understanding of the spectrum of epilepsies associated with glucose transporter deficiency; this body of work carries major treatment implications as this disorder responds to the ketogenic diet. Her work is important as it has changed our concepts of the underlying neurobiology of genetic epilepsies.



*Jo Wilmshurst* (agree)

Associate Professor Jo Wilmshurst is Head of Paediatric Neurology at the Red Cross Children's Hospital, University of Cape Town, in South Africa.

She attained specialisation in paediatrics and sub-specialisation in paediatric neurology in the United Kingdom and South Africa.

Her areas of interest, and peer reviewed publications, include epilepsy in childhood, neurophysiology of childhood disorders, neuromuscular disorders of childhood and neuroinfectious diseases.

Her MD thesis was on peripheral neuropathies in children.

She is a member of the executive board of the Paediatric Neurology and Development Association of Southern Africa (PANDA-SA) and the African Child Neurology Association (ACNA).

She is Secretary of the International Child Neurology Association.

She is a member of the Commission on Paediatrics for the International League Against Epilepsy (ILAE). She is chair of the ILAE task force for infantile seizure guidelines and co-chair of the Guidelines Task Force.

She is chair of the African Paediatric Fellowship Program - a training program under the auspices of the University of Cape which aims at developing skills in paediatric disciplines of doctors from across Africa.



*Jerry R. Mendell*

Jerry R. Mendell, MD, is an attending neurologist at Nationwide Children's Hospital, the Dwight E. Peters and Juanita R. Curran Endowed Chair in Pediatric Research at the Abigail Wexner Research Institute at Nationwide Children's Hospital and professor of Pediatrics and Neurology at Nationwide Children's and The Ohio State University.

Dr. Mendell joined the Research Institute at Nationwide Children's fulltime in 2004, recruited by Philip Johnson, the Head of the Center for Gene Therapy at that time. Shortly after, leadership of the Center changed and provided the opportunity to build and establish a program in Clinical Translation with emphasis on neuromuscular disease. At Nationwide Children's, he holds academic positions as Professor of Pediatrics and Neurology and holds the Curran-Peters Chair of Pediatric Research.

He is a clinician scientist with decades of experience. A career emphasis began with training in neuromuscular disease at the National Institutes of Health, directing laboratory projects that could be carried to the bedside. He was recruited to Columbus to direct the Neuromuscular Center at Ohio State. His life's work has emphasized clinical translation. He has published more than 370 articles with a focus on neuromuscular disease and authored books on muscle disease, peripheral nerve disorders, and most recently, gene therapy for muscle disease. He was the principal investigator on the prednisone clinical trial in DMD in 1989 that has profoundly influenced clinical care. He was the PI on the exon skipping trial using eteplirsen, now FDA approved for clinical use in 2016. He was the PI on the first gene therapy trials for DMD and LGMD and was the PI on the SMA gene therapy trial that was FDA approved for systemic delivery for infants with SMA type 1 in 2017. The results of the first systemic gene therapy trial for DMD is now moving to Phase 3. Results from the Phase 1/2 micro-dystrophin trial will be published in June 2020.



*Ingrid Tein (agree)*

Dr. Tein is founder and Director of the Neurometabolic Clinic, Investigational Unit and Research Laboratory, Staff Neurologist in the Division of Neurology and Senior Associate Scientist in the Genetics and Genomic Biology Program in the Research Institute at the Toronto Hospital for Sick Children and Associate Professor of Pediatrics and Laboratory Medicine and Pathobiology at the University of Toronto. Dr. Tein directs the Neurometabolic Clinic for the investigation and treatment of children with fatty acid oxidation, mitochondrial, and peroxisomal disorders and cofactor-responsive epilepsies. Her Neuroinvestigational Unit includes prospective cross-over cofactor trials in children with mitochondrial disorders and the ergometric investigation of metabolic myopathies including use of <sup>31</sup>P-MRS spectroscopy. The goal of her Laboratory is the biochemical and molecular investigation of genetic fatty acid oxidation defects and development of in vitro disease models to understand the underlying pathophysiological mechanisms in order to develop new therapies. She has identified novel clinical and biochemical phenotypes and genotypes, developed new diagnostic screening tests, and developed novel treatment strategies aimed at bypassing or correcting the specific metabolic block which have decreased long-term morbidity and mortality in affected children and have been implemented internationally. Her research has been supported by the MRC (Canada), Canadian Institutes of Health Research, Heart and Stroke Foundation, MDA, UMDF, Foundation for Prader Willi Research, Myositis Association and Rare Diseases Foundation. She founded the Neurometabolic Fellowship program and is Director of the Annual Adam Barsky Lectureship in Mitochondrial Diseases. She served as Co-Chair of the international NINDS Mitochondrial Diseases Common Data Element Working Group (2014-2017) for development of a neurological assessment toolkit for mitochondrial RCTs to promote standardized comparisons between studies using clinically relevant endpoints. She has supervised over 30 research trainees in Neurometabolic Diseases which has led to the establishment of new Neurometabolic programs in Canada, the US, Europe, the Middle East and Oceania by her trainees. Dr. Tein is author of over 150 peer-reviewed original articles and reviews and has given over 350 invited talks at international conferences. She is recipient of the Samuel Lunenfeld Foundation Scholarship, Medical Research Council of Canada Scholarship, ICNA John Stobo Prichard Award, Menkes Award (UCLA 2012), and Colleen Giblin Award (Columbia University 2013). She also received the William A. Hawke award twice for excellence in teaching. She was President of the International Child Neurology Association (2014-2018) and served as Co-Scientific Director of the Canadian Mitochondrial Network and Director of the Clinical Research and Therapeutic Discovery Pillar (2018-2019).

## *Master Classes*

### *Movement Disorders*

In the sections, the Masters will introduce some specific and difficult movement disorders in children. They will discuss the diagnostic algorithm and treatment of movement disorders in children. Video demonstrations and interesting case presentations will be made to clarify the diagnostic dilemma in movement disorders.



**Jonathan Mink** (agree)  
University of Rochester  
School Medical Center,  
USA



**Manju Kurian**  
Great Ormond Street  
Hospital,  
UK

### *Neurometabolic Disorders*

The Masters will demonstrate the diagnostic algorithm of different neurometabolic diseases, including plasma aminoacidopathies, transporter disorders, vitamin-related disorders, and fatty acid oxidation disorders. Possible precision medicine in the future will also be demonstrated. Some important treatable neurometabolic diseases will be mentioned in the section.



**Philip Pearl** (agree)  
Harvard Medical School,  
USA



**Ingrid Tein** (agree)  
University of Toronto,  
Canada

### *Hereditary Myology*

Some mutations in a same gene can lead to different forms of hereditary myopathies and a same myopathic phenotype can derive from defects in different related genes making difficult a specific diagnosis. We invited Professional myologists lead the young generations highlighting clinical features, histological, and molecular aspects to learn the most prevalent hereditary myopathies.



**Ichizo Nishino**  
National Center of Neurology  
and Psychiatry,  
Japan



**Francesco Muntoni**  
UCL GOS Institute of  
Child Health,  
UK

### *Special Issue in Epilepsy*

Epilepsy is an important disease in children. In this section, the Masters will demonstrate the dilemma in the treatment and diagnosis of epilepsy in children. The epilepsy with different comorbidities will be discussed. The genetic role in the diagnosis of epilepsy and its precision medicine will also be demonstrated using different case presentations. We also welcome all input from the audience and young generation during the Master class section.



**Lakshmi Nagarajan**

(agree)  
UWA Medical School,  
Australia



**Shinichi Hirose**

(agree)  
Fukuoka University,  
Japan



**Elaine C. Wirrell** (agree)

Mayo Clinic,  
USA

### *Leukodystrophy*

Genetic approach and treatment of leukodystrophies tend to combine current features and development issues in novel genetic treatment design. Here, we invited experts whom are famous in the clinical features, image presentation and genetic diagnosis, as well as especially the successful novel gene therapy in leukodystrophies currently.



**Florian Eichler** (agree)

MassGeneral Hospital for  
Children,  
USA



**Francesca Fumagalli**

San Raffaele Hospital,  
Italy

### *Neuroinflammatory Diseases*

More and more autoantibodies-mediated CNS neuroinflammatory disorders have been found, like NMOSD, MOG antibody-associated diseases and autoimmune encephalitis like NMDAR encephalitis in recent two decades. However, the curable strategy and long-term outcome has not concluded yet in pediatric patients. Thus, we invite experts of pediatric neuroinflammatory diseases to highlight this important issue.



**Yael Hacoheh** (agree)  
University College London,  
UK

### *Role Model in the Field of Pediatric Neurology*

A higher quality of the clinical neuroscience course, intellectual challenge, and logical reasoning in pediatric neurology as well as inspiration by role model teachers are important issues in their training as a pediatric neurologist. In the section, some successful pediatric neurology mentors will share their experience in their career development and obstacles the faced in the past.



**Jo Wilmshurst** (agree)  
The Red Cross Children's  
Hospital,  
South Africa



**Ingrid Tein** (agree)  
University of Toronto,  
Canada



**Pratibha Singhi** (agree)  
Medanta Gurugram, India

### *Genetic Analysis: How to Approach in Negative Result?*

Proportional patients with suspected Mendelian disorders including many neurodevelopmental disorders are not captured by whole-exome sequencing (WES). The question is that what's next step after WES? Whole genome sequencing (WGS) or whole transcriptome sequencing (WTS) may be as supplement to WES. We invite neurogenetic experts to give us this new concept for further consideration.

*Speakers to be decided*

## *Workshops*

### *Medical Humanities and Education*

Nowadays a driving force of the international movement to establish the medical humanities as a core and integrated provision in the medical curriculum. In this section, medical humanities will introduce the inter- and multidisciplinary field that explores contexts, experiences, and critical and conceptual issues in medicine and health care. Also, medical education for the young generation is our major task to inherit the knowledge, experience and humanities. We invite the specialists to give us the impact of medical humanities provision upon the education of medical students and young physicians.



**Jorge Vidaurre** (agree)  
Nationwide Children's  
Hospital,  
USA



**Biju Hameed** (agree)  
Consultant Paediatric  
Neurologist,  
UK



**Alcy Torres**  
Boston University,  
USA



**KP Vinayan** (agree)  
Amrita Hospital,  
India

### *AI in Pediatric Neurology*

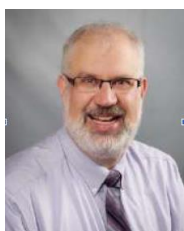
Artificial intelligence (AI) is a field, which combines computer science and robust dataset, to enable problem-solving. Due to huge amount of data being generated in patient laboratory data and biomedical fields, AI has been a crucial computational tool to improve predicting modeling and stimulation. Pediatric neurologic field, such as cerebral palsy, AI applications may help the pediatric neurologist to be more and more specific management approaches. Whether the future is waiting us, it's time to learn from the specialists' lectures.



**Bernard Dan**  
Université Libre de Bruxelles,  
Belgium

### *Career Development for Young Generation*

In the workshop, some mentors in different fields will share their experience in career development, either in clinical part or research part. There will be much discussion and exchange in life experience between young generation and mentors. We encourage more young generation can attend this workshop, and express what they need and what they want. We hope the discuss can shed light in the organization of more suitable sections for ICNC in the future.



**Jonathan Mink** (agree)  
University of Rochester  
School Medical Center,  
USA



**Helen Cross**  
University College  
London,  
UK

### *Fetal Brain MRI Correlation with Diagnosis and Outcome*

The diagnosis and treatment of neurological diseases in fetal stage become more and more important in recent years. In the workshop, we will demonstrate the diagnosis pitfuls in fetal MRI. We will show the findings of different neurological diseases in fetal stage. The correlation of fetal MRI findings and neurological outcome will be investigated and discussed. We hope the present workshop can give all audience an update knowledge about the role of fetal MRI in the diagnosis and treatment of neurological diseases.



**Jeroen Vermeulen**  
VU University Medical  
Centre,  
Netherlands



**Aida Noriko**  
Kanagawa Children's  
Medical Center, Japan

### *Telehealth/Telemedicine in Pediatric Neurology*

What is telemedicine?

Why telemedicine now?

What are the benefits of telemedicine?

What types of care can you get using telemedicine?

The focus will be on pediaatric neurological problems and the clinical practice.

*Speakers to be decided*



## ***Neurologic Problems in Resource-Limited Countries***

How to improve care quality of neurologic problems in resource-limited countries

1. Many neurological disorders of children are complex in terms of both diagnosis and treatment, requiring expensive diagnostic equipment and long-term care.
2. Issue regarding public health and problems solving.

*Speakers to be decided*

## ***Special Interest Groups***

### ***COVID19 and Neurology***

Acute and chronic complications of pediatric COVID19 infection

### ***Pediatric Stroke***

Update for the treatment of pediatric stroke and consensus of the protocol

### ***Pediatric Neuro-oncology***

1. Update for the 2021 WHO classification of pediatric brain tumors
2. Target therapy for pediatric brain tumor
3. Molecular genetic markers in childhood brain tumors

### ***Neurocutaneous Syndrome***

Update treatment for neurocutaneous syndrome

### ***Gene Therapy for Pediatric Neurology***

Gene therapy for rare pediatric neurological disease

--- Gene-targeted therapies in pediatric neurology: challenges and opportunities in diagnosis and delivery

### ***Neurocritical Care***

Neurological monitoring and intensive care for encephalitis and refractory status epilepticus --- multimodal approach and application of intensive care facility.

## ***Debates***

Selected from the submitted proposals

## BUDGET PLAN

The tentative budget is planned according to the following considerations:

- According to past ICNC conferences, the number of participants of ICNC 2026 is estimated to be around 2000 people. The income and expenditure for each item are estimated based on this number.
- Historically, the registration fee for ICNC varied with the host city. The registration fee for ICNC 2026 is derived based on previous ICNC 2022/2020 as well as the economy and living standard of Taiwan.
- The cost of each item is estimated according to the commodity price of 2022. The actual cost may be higher in 2026.

### *Discount for Young Generation and Low-income Countries*

The amount of government subsidies may vary greatly. Therefore, we do not include government subsidies in this budget table. **Should the funding from the government increase, we will consider lowering the registration fees of student / fellow / resident and low-income countries participants.** The possibilities of government subsidies are listed below:

Government Unit	Expected Amount
Ministry of Science and Technology	TWD 600,000 / USD 20,900
Bureau of Foreign Trade	TWD 420,000 / USD 14,000
Ministry of Foreign Affairs	TWD 150,000 / USD 500

### *Registration Fee*

Dates	Early Bird Registration		Regular Registration		Onsite Registration	
Categories	Member	Non-Member	Member	Non-Member	Member	Non-Member
High Income	\$ 750	\$ 800	\$ 780	\$ 840	\$ 780	\$ 840
Upper Middle Income	\$ 550	\$ 600	\$ 590	\$ 650	\$ 590	\$ 650
Lower Middle Income	\$ 450	\$ 500	\$ 490	\$ 550	\$ 490	\$ 550
Low Income	\$ 250	\$ 300	\$ 280	\$ 340	\$ 280	\$ 340
Student / Fellow / Resident / Nurse / AHP	\$ 250	\$ 300	\$ 280	\$ 340	\$ 280	\$ 340
Accompanying Person	\$ 250	\$ 250	\$ 250	\$ 250	\$ 250	\$ 250

## Detailed Budget

Summary Income	TWD	USD
Registration Fees	2,300,000	766,667
Sponsorships	2,200,000	73,333
<b>Total Receipts</b>	<b>25,200,000</b>	<b>840,000</b>
<b>Summary Expense</b>		
Venue Rental	3,500,000	116,667
Audio-Visual/Equipment	3,028,500	100,950
Exhibits	147,000	4,900
Catering	7,619,000	253,967
Honorarium	466,640	15,555
Signage & Decoration	1,749,100	58,303
Printing Materials & Gifts	4,620,050	154,002
Administrative Services	2,206,460	73,548
Onsite Staff & Professionals	851,750	28,525
Website & Online System	401,500	13,583
<b>Total Expenses</b>	<b>24,600,000</b>	<b>820,000</b>
<b>Surplus</b>	<b>600,000</b>	<b>20,000</b>
<b>Surplus (%)</b>	<b>2.4%</b>	<b>2.4%</b>

**SEE REVISED BUDGET PROVIDED  
IN EXCEL SHEET PROVIDED**

# SOCIAL PROGRAMS

In order to express our sincere welcome to all the participants, we plan to hold an opening ceremony including buffet and a banquet. Every attendee is expected to enjoy the beautiful nights in Taiwan.

## *Opening Ceremony*



Opening ceremony will be held in the second evening of ICNC 2026 to welcome the participants all around the world. Finger food along with Taiwan traditional folk arts booths will be arranged for it. The ceremony venue is at Taipei International Convention Center for participants to access easily.

- Venue: Banquet Hall, Taipei International Convention Center
- Type of meal: Standing buffet / Finger food
- Entertainment:
  - ◇ String Quartet from National Symphony Orchestra
  - ◇ Taiwan traditional folk arts booths

## *Banquet*



Banquet will be held in the third evening of ICNC 2026. Participants and accompanying persons are invited to attend this event. Brilliant indigenous performances will be arranged for it.

- Venue: Grand Hyatt Taipei
- Type of meal: Chinese set dinner
- Entertainment:
  - ◇ Formosa Aboriginal Song and Dance Troupe
  - ◇ Music Line Jazz Band

# ORGANIZING COMMITTEE FOR ICNC 2026

## PROPOSAL

Wang-Tso Lee	National Taiwan University Hospital
Yung-Ting Kuo	Shuang Ho Hospital
Che-Sheng Ho	Mackay Children's Memorial Hospital
Kuang-Lin Lin	Chang Gung Memorial Hospital
I-Ching Chou	China Medical University Hospital
Shyi-Jou Che	Tri-Service General Hospital
Yi-Fang Tu	National Cheng Kung University Hospital
Haung-Chi Lin	En Chu Kong Hospital
Jainn-Jim Lin	Chang Gung Memorial Hospital
Lung-Chang Lin	Kaohsiung Medical University Hospital
Nan-Chang Chiu	Mackay Memorial Hospital
Pi-Lien Hung	Kaohsiung Chang Gung Memorial Hospital
Pi-Chuan Fan	National Taiwan University Hospital
Ming-Yuh Chang	Changhua Christian Hospital
Jao-Shwann Liang	Far Eastern Memorial Hospital
Min-Lan Tsai	Taipei Medical University Hospital
Tai-Tong Wong	Taipei Medical University Hospital
Wei-Sheng Lin	Taipei Veterans General Hospital
Chu-Chin Chen	Kaohsiung Veterans General Hospital
Rei-Cheng Yang	Kaohsiung Medical University Chung-Ho Memorial Hospital
Hui-Ju Chen	Mackay Memorial Hospital
Huei-Shyong Wang	Chang Gung Medical Center
Ein-Yiao Shen	Clinic
Kun-Long Hung	Fu-Jen Catholic University Hospital
Chao-Ching Huang	National Cheng Kung University Hospital
Ching-Shiang Chi	Tungs' Taichung MetroHarbor Hospital
Yuh-Jyh Jong	Kaohsiung Medical University Chung-Ho Memorial Hospital

# TAIWAN AT A GLANCE

## Weather

Taiwan enjoys a warm weather all year round. The strongest fluctuations in weather conditions are during spring and winter, while in summer and autumn the weather is relatively stable. Taiwan is extremely suitable for traveling, as the annual average temperature is comfortably around 22 degrees Celsius.

**October is the perfect season to visit Taiwan** because of the moderate and comfortable weather with temperature ranging from 15 to 25°C (59–77°F) and low rainfall. In addition, the typhoon season normally ends in August, so the chance of having unexpected weather is small.

## Transportation



## International Flights

Located at the center of the Asia-Pacific region, Taiwan has a total of 17 airports, four of which provide international services. More than 4,500 international flights land at Taiwan Taoyuan International Airport (TPE) weekly, connecting Taiwan to 100 countries globally.

### ***Domestic Transportation***

Domestic transportation is very convenient in Taiwan. Scheduled buses run from the airports to all major cities. Local bus companies also operate inter-city services that cover the whole island. Tour bus operators offer buses for charter.

The Taiwan High Speed Rail (HSR) significantly reduces the traveling time between northern and southern Taiwan. The HSR connects Taipei and Kaohsiung, passing through ten counties, four metropolis, and 77 towns en route. The HSR allows visitors to travel from Taipei to Kaohsiung in less than two hours.

There are MRT systems in Taipei City which has six routes. According to the Railway Technology Strategy Centre of Imperial College and Nova/CoMET, Taipei MRT is the best in the world in four consecutive years in terms of reliability, safety, and quality. Besides, cars can be rented at service counters in major airports and cities. They may also be rented at hotels and taxi companies.

### ***Easy Access from the World***

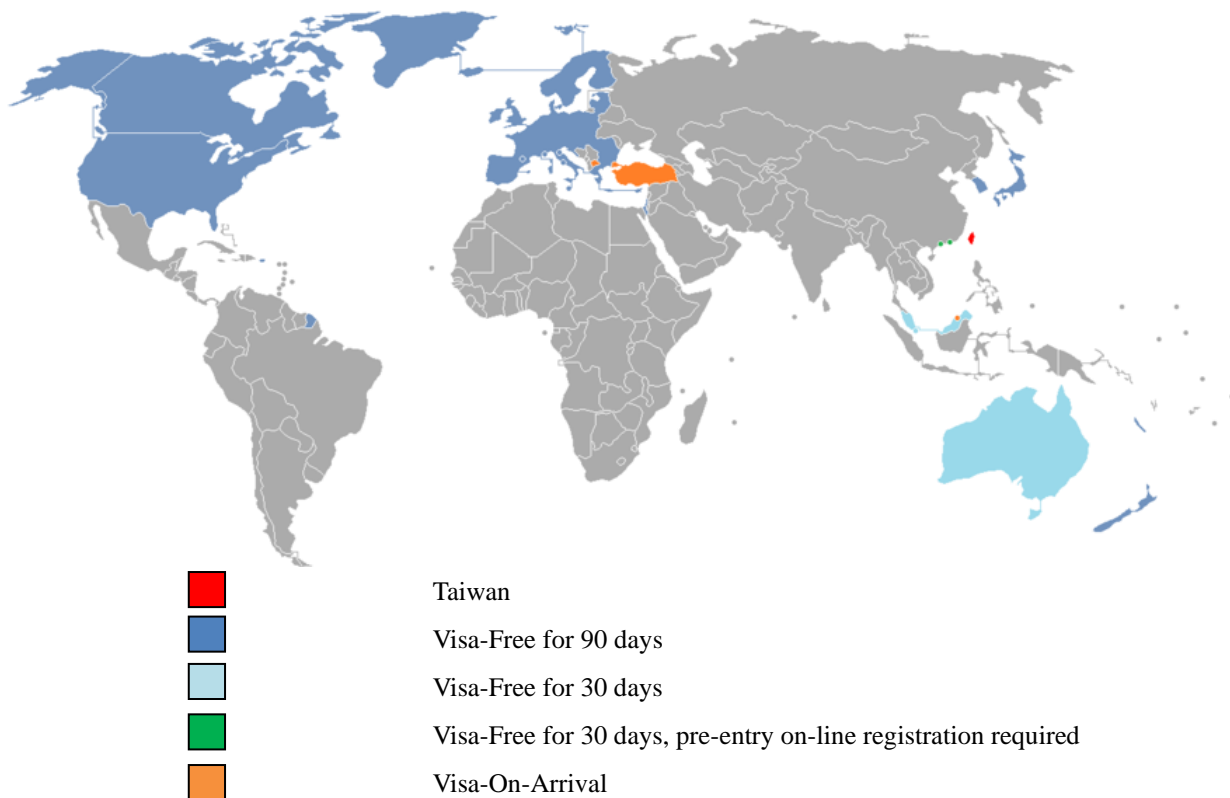
Asia		
Country	City	Flight Time
China	Hong Kong	1 hour 40 minutes
	Shanghai	1 hour 35 minutes
	Beijing	5 hours
India	Delhi	7 hours 30 minutes
Indonesia	Jakarta	5 hours 40 minutes
Japan	Tokyo	3 hours
Korea	Seoul	2 hours 20 minutes
Malaysia	Kuala Lumpur	4 hours 30 minutes
Philippines	Manila	2 hours
Singapore	Singapore	4 hours 20 minutes
The Americas		
Argentina	Buenos Aires	27 hours 55 minutes
Brazil	Rio de Janeiro	24 hours 55 minutes
Canada	Vancouver	11 hours 30 minutes
U.S.A.	New York	17 hours
	San Francisco	10 hours 40 minutes
	Los Angeles	11 hours 20 minutes

Europe and Oceania		
Country	City	Flight Time
France	Paris	13 hours 30 minutes
Germany	Frankfurt	13.5 hours
Italy	Rome	16 hours
Spain	Madrid	19 hours 20 minutes
Switzerland	Zurich	17 hours 20 minutes
Austria	Vienna	17 hours 5 minutes
Belgium	Brussels	17 hours
Denmark	Copenhagen	18 hours
England	London	16 hours 25 minutes
Finland	Helsinki	16 hours 55 minutes
Greece	Athens	16 hours 20 minutes
Netherlands	Amsterdam	16 hours 40 minutes
Norway	Oslo	19 hours
Sweden	Stockholm	19 hours
Australia	Sydney	9 hours 10 minutes
New Zealand	Auckland	11 hours

## Customs/Entry

Taiwan has reciprocal and unilateral visa exemption arrangements with a relatively large number of countries. The visa policy of Taiwan grants visa-free and visa-on-arrival travel for citizens of 45 countries, and an online travel authority is valid for citizens of 7 countries/territories. Although international travel is limited in Taiwan due to COVID-19 now, we are confident that it will recover in 2026.

- ✧ **Visa-exempt countries (up to 90 days):** Andorra, Austria, Belgium, Bulgaria, Canada, Croatia, Cyprus, Czech Republic, Denmark, Estonia, Finland, France, Germany, Greece, Hungary, Iceland, Ireland, Israel, Italy, Japan, Republic of Korea, Latvia, Liechtenstein, Lithuania, Luxembourg, Malta, Monaco, the Netherlands, New Zealand, Norway, Poland, Portugal, Romania, San Marino, Slovakia, Slovenia, Spain, Sweden, Switzerland, U.K., U.S.A., and Vatican City State.
- ✧ **Visa-exempt countries (up to 30 days):** Australia, Malaysia, and Singapore.
- ✧ **Visa-Free for 30 days, pre-entry on-line registration required:** Indonesia, India, Vietnam, the Philippines, and Thailand.
- ✧ **Visa-on-Arrival:** Brunei, Macedonia, and Turkey.





## *Convenient Living*

Taiwan is a place of great hospitality and convenience. It has the highest density of 24-hour convenience stores in the world: one store within 0.5 miles radius. Convenient stores in Taiwan also collect credit card payments and package mailing services.



There are many large shopping centers and department stores in Taiwan. With diverse leisure and entertainment facilities, these venues offer designer clothing, lifestyle products, food outlets, bookstores, movie houses, wholesale warehouses, amusement centers, and other attractions. Furthermore, several theme streets such as the Ximending in Taipei and the New Juejiang in Kaohsiung have sprung up, exhibiting

an exciting blend of history and style. Other venues, including the weekend jade market, Songshan Cultural and Creative Park, the Guanghua Digital Plaza, and night markets in Taiwan are exciting places to find unexpected bargains.

## *Cultural Heritage*

Prehistoric people, aborigines, Dutch, Spanish, Japanese, and Han Chinese have created a multicultural society of diverse customs and traditions in Taiwan. The colonial legacies of Taiwan can still be found around the island today. Visitors will be able to get in touch with all aspects of the multifaceted cultures of this beautiful country.

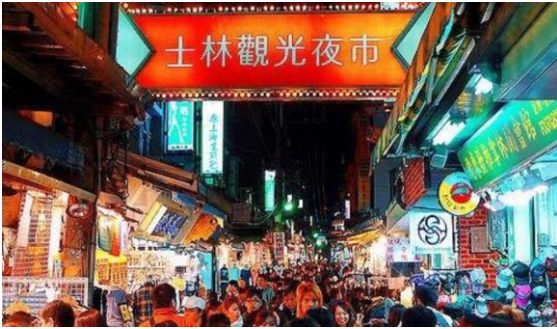


National Palace Museum is one of the greatest attractions in Taiwan, which houses more than 650,000 pieces of Chinese bronze, jade, calligraphy, painting, and porcelain. It is also one of the few places with the greatest Chinese art and objects in the world. The collection, estimated to be one-tenth of the Chinese cultural treasures, is so extensive that only 1% is on display each time.

Taiwan also offers a unique collection of artworks, such as Sanyi's wooden carvings, and Kinmen's ceramics. The Taiwanese culture and historical background can be further explored during traditional festivals, such as Lunar New Year, Mid-Autumn Festival, Lantern Festival, and Ghost Festival.



## *Appetizing Food*



The culinary culture of Taiwan goes back a very long time. While Chinese food can be found everywhere in the world today, true gourmets know that it is possible to enjoy fine authentic cuisine of different regions of China only in Taiwan.

Taiwan has the best night market scene in the world and some of the most exciting snack shops in Asia, which offer endless feasts at very reasonable price.

## *Attractions\**

### *National Scenic Areas*



From winding coastlines to high mountain forests and offshore islands, Taiwan has been generously endowed by nature. It has 13 national scenic areas: 1) North Coast and Guanyinshan National Scenic Area boast fine sandy beaches and stunning vistas, 2) Northeast and Yilan Coast National Scenic Area features numerous capes and bays backed by green mountains, 3) East Coast National Scenic Area is known as Taiwan's last unspoiled land, 4) East Rift Valley National Scenic Area is famous for its green farm fields stretching to the mountains, 5) Dapeng Bay National Scenic Area has rich sea animals and plants, 6) Southwest Coast National Scenic Area is a place established at the end of 2003 to protect the migratory birds and other coastal dwellers, 7) Siraya National Scenic Area is known as a land of abundance, 8) Maolin National Scenic Area is full of hot springs and aboriginal cultures, 9) Alishan National Scenic Area is renowned for cloud sea, sunrise, and sunset glow, 10) Sun Moon Lake National Scenic Area is praised for its five major recreational systems, including the lake, Shueili River, Puli, Jhuoshuei River, and Jiji, 11) Tri-Mountain National Scenic Area is known for its abundant vegetation, old trees, and temples, 12) Penghu Islands are surrounded by clear seawater, pure beaches, and beautiful skies, and 13) Matsu National Scenic Area has a reputation for military stronghold.



### *National Parks*

Taiwan now has eight National Parks: 1) Yangmingshan National Park in Taipei suburb is famous for its volcanic landscape, 2) Shei-Pa National Park at Hsinchu and Miaoli counties boasts special fish species, 3) Taroko National Park is featured with spectacular mountains and marble canyons, 4) Yushan National Park is famous for its bright sunshine and starry nights, 5) Kenting National Park, located in south tip, provides you a dip at the clear beach and bath of the sunshine, 6) Kinman National Park is situated in an island known for the fierce fighting between Communist and Nationalist forces decades ago, 7) Dongsha Atoll Marine Park has a unique white sand landscape formed of corals and shells, and 8) Taijiang National Park await visitors' to discover migrant birds and salt-making culture. In addition to beautiful natural settings, these national parks also attract tourists for their unique ecological landscapes.



\* The information is obtained from the Tourism Bureau, Taiwan. More information can be found in <http://taiwan.net.tw>.

# HOT TOURIST SPOTS IN TAIWAN

**Taipei 101:** Taipei 101 is the most famous landmark in Taipei City. It was the tallest skyscraper from 2004 to 2010 in the world, and is noted for being the tallest “green building” today. One can enjoy the best panoramic view of the city from observatory on the 89<sup>th</sup> floor and outdoor viewing platform on the 91<sup>st</sup>.



**Chiang Kai-Shek Memorial Hall:** The CKS Memorial Hall was erected in honor of Chiang Kai-Shek, the former President of the Republic of China. Besides the main hall, the large complex includes the Chiang Kai-Shek Memorial Park, National Concert Hall, and the National Theater. In addition, the museum below the hall documents Chiang’s life and career, and also exhibits R.O.C’s development after moving to Taiwan.

**Fisherman's Wharf:** The Tamsui Fisherman's Wharf is well known for its beautiful sunset and fresh seafood. It is constituted of a spacious harbor park, and a wooden path stretching over 300 meters at the water front, forming an annular moving line for visitors to enjoy and appreciate the beautiful sight. The bridge spanning across the harbor was constructed in the shape of a sailing boat, providing a best place to watch the sunset.



**Hualien:** Apart from the natural beauty of the city, Hualien also offers tourists many other attractions including the waterfront Seaside Park, the Nanbin Park of numerous marine sculptures, the "Hawaii of the East" resort built in Polynesian style, and reef walking and rock collection at Chishingtan.

**Jiufen:** Jiufen was only an isolated village until 1893, when gold was discovered in the area. The gold rush hastened the village's development into a town, and reached its peak during the Japanese rule. Many present features of Jiufen reflect the era under Japanese colonization, with many Japanese inns surviving to this day. The success of the film “A City of Sadness” transformed Jiufen into a tourist attraction. The nostalgic scenery of Jiufen as seen in the film attracts many people to visit this place, where they get to explore the life of mining in old times.





**Mt. Hehuan:** Mt. Hehuan is located at central Taiwan on the western edge of Taroko National Park. This alpine park is characterized by its rolling green hills that often disappear in a sea of clouds. This is a place to find the most accessible high altitude hiking trails in Taiwan with peaks reaching more than 3000 meters.

**Wulai:** Most residents in Wulai are aboriginal people. With a beautiful natural landscape, Wulai is a popular destination for fishing, swimming, and camping. Visitors may take a stroll on Wulai Old Street, and enjoy local vegetables and aboriginal cuisines at Atayal restaurants. Visitors may also visit other sightseeing spots in Wulai, such as Atayal Museum, Wulai tourist train, and Neidong Forest Recreation Area.



**Green Island:** Green Island isn't on the top of the tourist list, but it deserves more attention than it's actually getting. The island is quite small, but it's still one of the most pristine places in Taiwan. Green Island is perfect for scuba diving if the visitor wants to enjoy a day away from the intensity of industrialization omnipresent in most cities on the main island of Taiwan.

## BIRD WATCHING



If birding is your favorite activity, Taiwan is your theater of nature. Over 600 bird species in Taiwan have been recorded, among which approximately 20 are endemic species and many are endemic subspecies resulted from the long isolation of this island since the Ice Ages. Although small in area, Taiwan has a complex topography—ranging from mountains nearly 4000 meters high and huge forests to rugged, varied plains and onrushing streams and rivers—giving the island many small, localized ecological environments and contributing to the island's bountiful and complex biological species. Many bird watching sites are easily accessible. Using *birding in Taiwan* as the key words to search over the Internet, you can find rich information about bird watching in Taiwan, including tours with certified tour guides.